



Canal Bank Limerick

A mixed use development at Pa Healy Road and City Canal ,
Limerick

Revington Developments Ltd Ltd

Materials and finishes Specification Report

OCA Architects

october 2021

Introduction

General description.

The design of this development envisages a progressive development with civic street front blocks addressing Pa Healy Road,

Materials are chosen for robustness, with a particular view to the context of neighbouring historic Limerick streetscapes.

Materials-Brick, stone and render and standing seam metal are used in a palette, with glazing, balcony frame detailing, and context details such as canopy

View opposite is of principle corner view showing materials



Material of Landscape

The hard and soft landscape integrates with the building facades

-see Landscape Architects details for specification



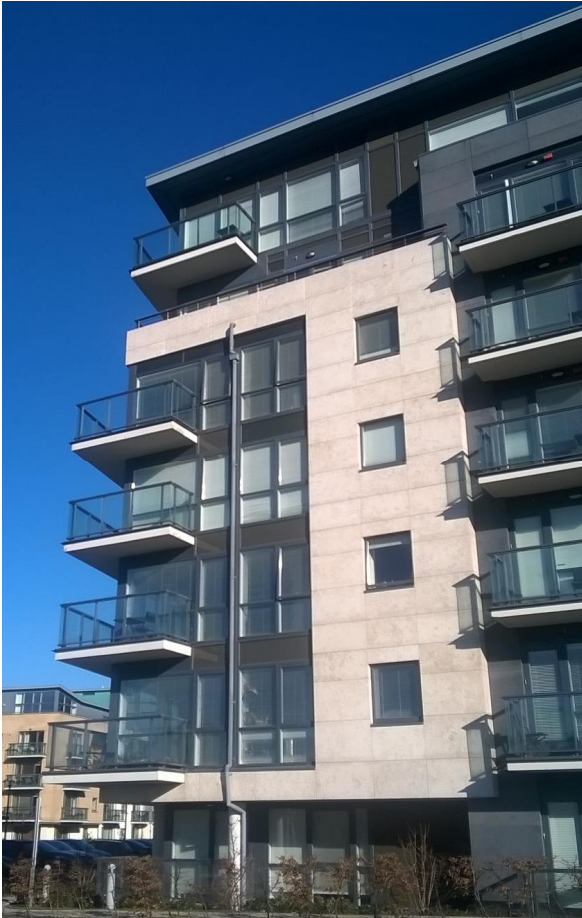
Student Residence Facade



This façade features high quality materials and has a defined ground floor to reflect the ancillary retail and entrance activity



Build to Rent Apartments



Stone cladding and balcony variety articulation

PROPOSED MATERIALS SAMPLE
Natural Polish granite

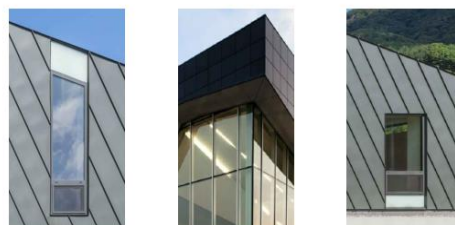
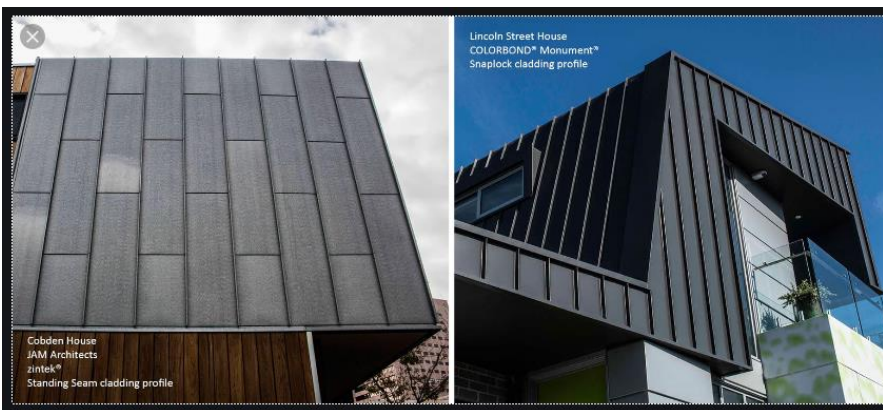


1 PROPOSED BLOCK 2 - FRONT ENTRANCE ELEVATION COLOR WITH MATERIALS SAMPLE
1:200

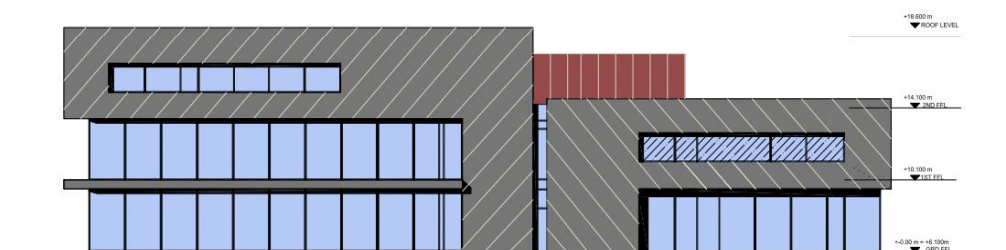
PROJECT ■ CANAL BANKS AT PA HEALY ROAD/PARK ROAD, LIMERICK
 CLIENT ■ REVINGTON DEVELOPMENTS LTD
 TITLE ■ PROPOSED BLOCK 2 - FRONT ELEVATION IN COLOR
 SCALE: 1:200 @A3 DATE: SEPT 2019 DRWG N° 1248-16-22 DRN. BY OLIVER CARTY
OCA ■ ARCHITECTS 44-45 LR CAMDEN ST DUBLIN 2
 Tel 01 4763922 Fax 01 4780028 Email info@ocaaarchitects.ie

Use figured dimensions only. This data is supplied electronically for convenience only. No liability is accepted for any inference taken or effect on any system, however caused.
 This drawing and any design herein is copyright and may not be altered, reproduced or otherwise used without express permission of Oliver Carly & Associates Limited.

Community Facilities Building



A Rheinzinc or similar material standing seam graphite grey colour

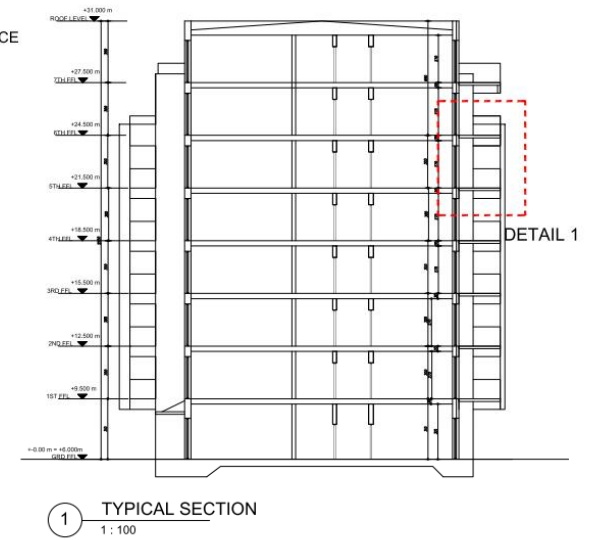
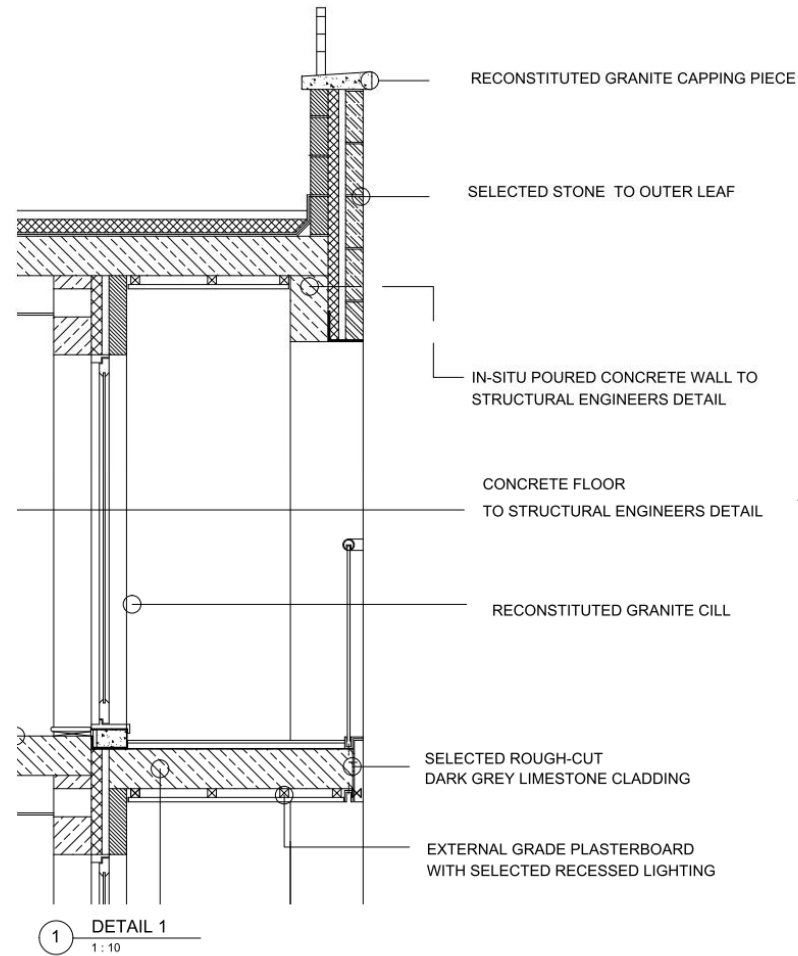


PROPOSED COMMUNITY FACILITIES BUILDING
- COLOR ENTRANCE ELEVATION
① 1: 200

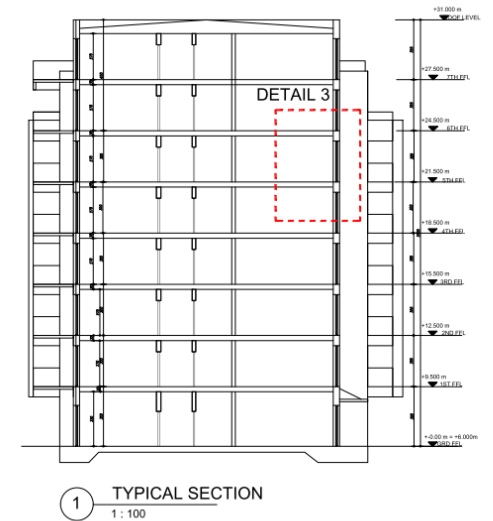
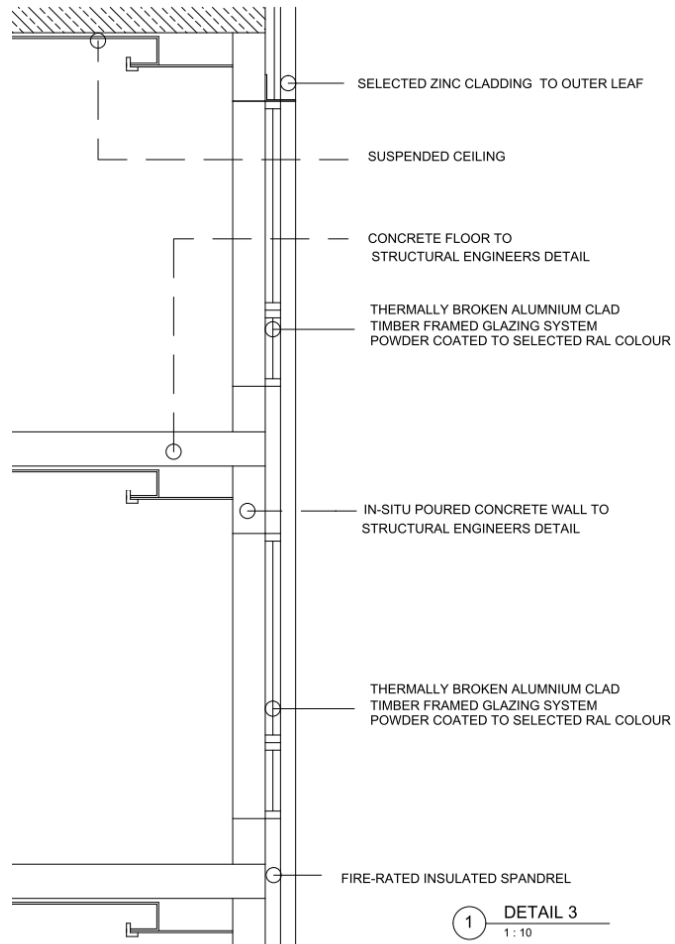
PROJECT ■ CANAL BANKS AT PA HEALY ROAD/PARK ROAD, LIMERICK
CLIENT ■ REIVINGTON DEVELOPMENTS LTD rev.
TITLE ■ PROPOSED COMMUNITY FACILITIES BUILDING - FRONT ELEVATIONS
SCALE: 1:200 @A3 DATE: SEPT 2019 DRWG N° 1248-18-47 DRN. BY OLIVER CARTY
OCA ■ ARCHITECTS 44-45 LR CAMDEN ST DUBLIN 2
Tel 01 4763922 Fax 01 4789028 Email info@ocaarchitects.ie

Use figured dimensions only. This data is supplied electronically for convenience only. No liability is accepted for any inference taken or effect on any system, however caused.
© This drawing and any design herein is copyright and may not be altered, reproduced or otherwise used without express permission of Oliver Carty & Associates Limited.

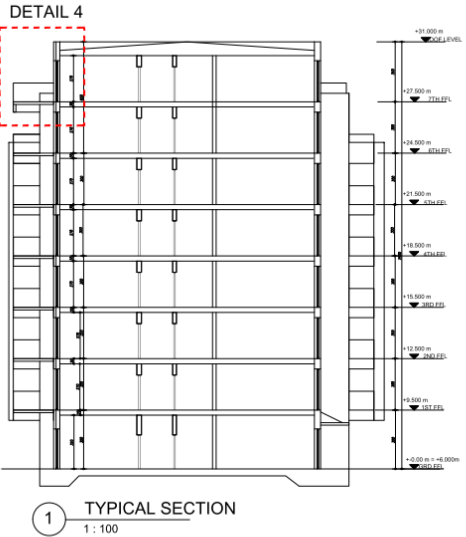
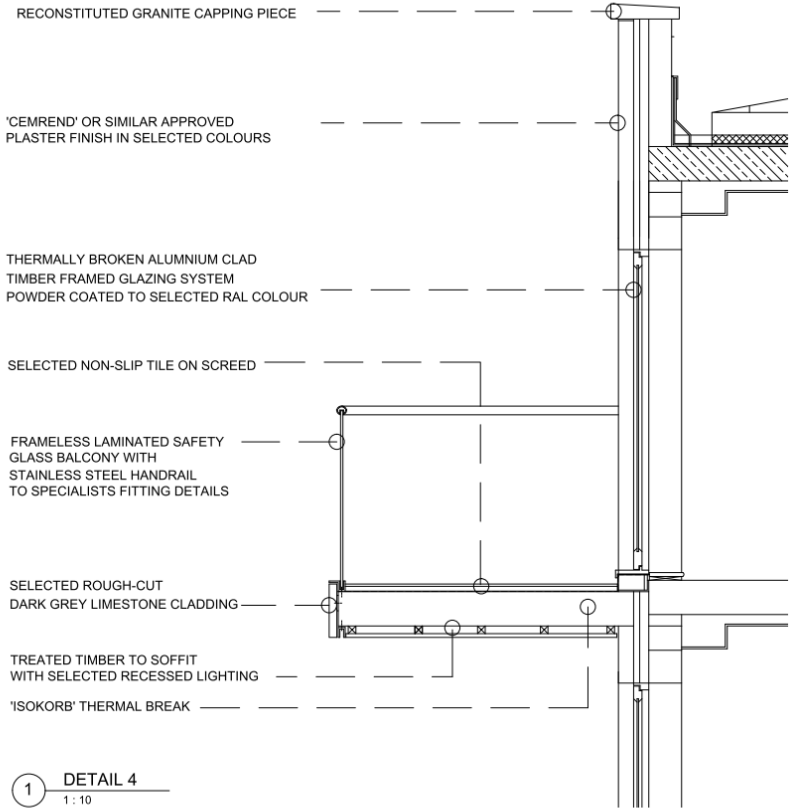
Detail 1: Parapet and Balcony



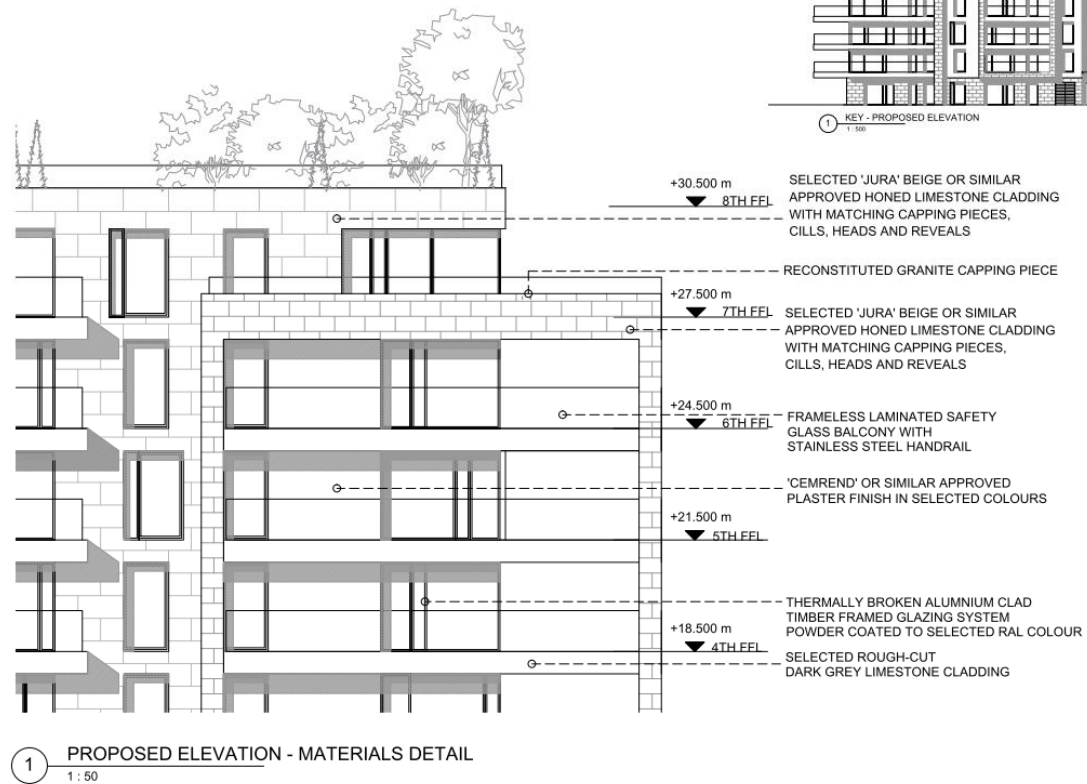
Detail 2: Stacked Glazing, composite Facade



Detail 3; Projecting Balcony



Detail 4: Overall façade Articulation



Horizontal
Plane
detailing-
Landscape
Roof
gardens,
surfaces.

